

## **Royal Oak Dr between Chatterton Way and Falaise Cres**

**October 28, 2019 To November 01, 2019**



The data presented here is for information purposes only and should not be considered authoritative for construction, geotechnical, engineering, navigational, legal, or other site-specific uses. The information shared is owned by the Transportation Division of the Engineering Department at the District of Saanich. Accuracy is not guaranteed.

Start Date: 28-Oct-19  
 Start Time: 0:02  
 Station ID: M0030-06

**Location 1: Royal Oak Dr between Chatterton Way and Falaise Cres**

Note:

DATE:	October 28, 2019		October 29, 2019		October 30, 2019		October 31, 2019		November 1, 2019		WK AVG		WK AVG	HOURLY
	MON		TUE		WED		THURS		FRI		EB	WB	CH 1+2	%
Time:	EB	WB	EB	WB	EB	WB	EB	WB	EB	WB	EB	WB		
12-1 AM			32	9	20	13	11	16			21	13	34	0.2%
1-2 AM			10	11	9	4	10	3			10	6	16	0.1%
2-3 AM			9	3	6	2	5	7			7	4	11	0.1%
3-4 AM			6	15	4	12	5	11			5	13	18	0.1%
4-5 AM			12	37	13	30	15	22			13	30	43	0.3%
5-6 AM			51	117	43	95	44	118			46	110	156	0.9%
6-7 AM			153	219	149	234	158	215			153	223	376	2.2%
7-8 AM			396	537	371	479	471	506			413	507	920	5.5%
8-9 AM			584	698	594	751	571	756			583	735	1318	7.9%
9-10 AM			483	548	510	624	525	572			506	581	1087	6.5%
10-11 AM			505	552	498	564	529	562			511	559	1070	6.4%
11-12 PM			561	567	585	610	612	592			586	590	1176	7.0%
12-1 PM			591	575	638	593	576	643			602	604	1205	7.2%
1-2 PM			610	546	576	536	626	529			604	537	1141	6.8%
2-3 PM			618	593	646	590	672	656			645	613	1258	7.5%
3-4 PM			648	676	655	667	707	703			670	682	1352	8.1%
4-5 PM			762	644	794	642	774	633			777	640	1416	8.5%
5-6 PM			766	594	698	553	723	513			729	553	1282	7.7%
6-7 PM			513	468	543	471	390	335			482	425	907	5.4%
7-8 PM			339	301	415	350	295	250			350	300	650	3.9%
8-9 PM			292	215	312	219	297	280			300	238	538	3.2%
9-10 PM			229	154	236	192	247	198			237	181	419	2.5%
10-11 PM			138	70	140	71	138	120			139	87	226	1.3%
11-12 AM			50	49	65	44	72	70			62	54	117	0.7%
<b>LANES</b>			<b>8358</b>	<b>8198</b>	<b>8520</b>	<b>8346</b>	<b>8473</b>	<b>8310</b>			<b>8450</b>	<b>8285</b>	<b>16735</b>	<b>100.0%</b>
<b>TOTAL</b>			<b>16556</b>		<b>16866</b>		<b>16783</b>				<b>16740</b>			
	MON		TUE		WED		THURS		FRI		WK AVG			

PEAK HOUR					TOTAL VEHICALS-PEAK PERIODS		2 HOUR PEAK INTERVALS							
MAX. 7 - 9 am PEAK HOUR	1318	⇒	7.9%	between 8-9 AM	7318	⇒	6 HR TOTAL	<b>2 HR AM (7 - 9 AM)</b>						
MAX. 7 - 11 am PEAK HOUR	1318	⇒	7.9%	between 8-9 AM	4937	⇒	4 HR TOTAL	VEH / HR	VEH / 2HR	2 HR %				
								7-8 AM	920	2238	13.4%			
								8-9 AM	1318					
MAX. 11 am - 1 pm PEAK HOUR	1205	⇒	7.2%	between 12-1 PM			<b>24 HOUR FACTORS</b>	<b>2 HR NOON (11 - 1 PM)</b>						
MAX. 11 am - 3 pm PEAK HOUR	1258	⇒	7.5%	between 2-3 PM				VEH / HR	VEH / 2HR	2 HR %				
								11-12 PM	1176	2381	14.2%			
MAX. 4 - 6 pm PEAK HOUR	1416	⇒	8.5%	between 4-5 PM	2.29	⇒	6-24 HR FACT.	12-1 PM	1205					
MAX. 3 - 6 pm PEAK HOUR	1416	⇒	8.5%	between 4-5 PM	3.39	⇒	4-24 HR FACT.	<b>2 HR PM (4 - 6 PM)</b>						
								VEH / HR	VEH / 2HR	2 HR %				
								4-5 PM	1416	2699	16.1%			
								5-6 PM	1282					

# Royal Oak Dr between Chatterton Way and Falaise Cres

Westbound

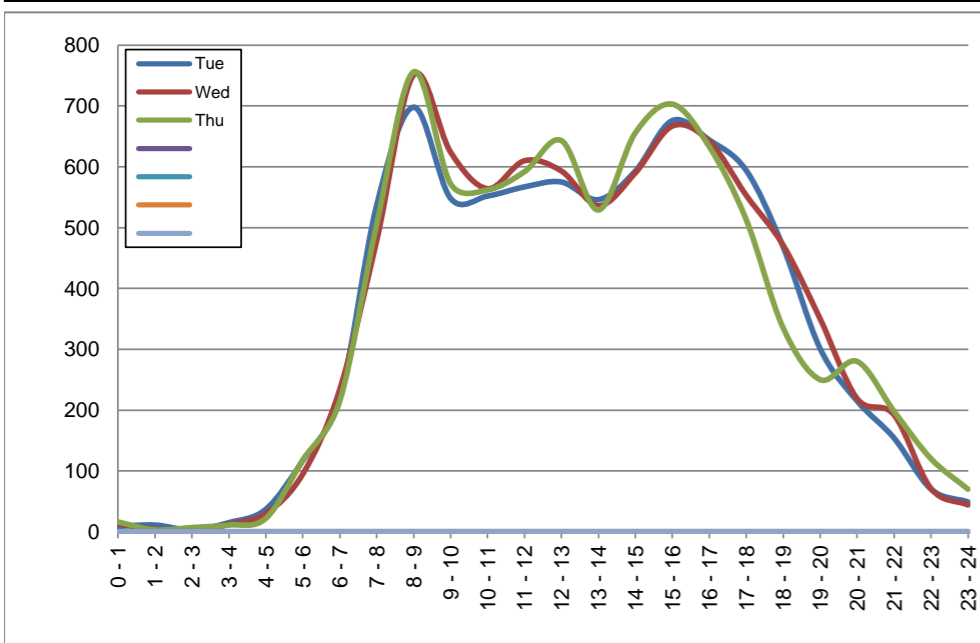
October 29, 2019 to October 31, 2019

## Hourly Volumes

Time Period	Tue	Wed	Thu			
	Oct 29	Oct 30	Oct 31			
0 - 1	9	13	16			
1 - 2	11	4	3			
2 - 3	3	2	7			
3 - 4	15	12	11			
4 - 5	37	30	22			
5 - 6	117	95	118			
6 - 7	219	234	215			
7 - 8	537	479	506			
8 - 9	698	751	756			
9 - 10	548	624	572			
10 - 11	552	564	562			
11 - 12	567	610	592			
12 - 13	575	593	643			
13 - 14	546	536	529			
14 - 15	593	590	656			
15 - 16	676	667	703			
16 - 17	644	642	633			
17 - 18	594	553	513			
18 - 19	468	471	335			
19 - 20	301	350	250			
20 - 21	215	219	280			
21 - 22	154	192	198			
22 - 23	70	71	120			
23 - 24	49	44	70			
<b>Day Total</b>	<b>8198</b>	<b>8346</b>	<b>8310</b>			

## 15-Minute Volumes

Time Start	Tue	Wed	Thu				Time Start	Tue	Wed	Thu			
	Oct 29	Oct 30	Oct 31					Oct 29	Oct 30	Oct 31			
0:00	4	7	8				12:00	145	146	173			
0:15	0	1	4				12:15	138	157	168			
0:30	3	3	4				12:30	155	145	143			
0:45	2	2	0				12:45	137	145	159			
1:00	5	0	1				13:00	137	126	122			
1:15	0	3	2				13:15	147	137	150			
1:30	4	1	0				13:30	131	134	132			
1:45	2	0	0				13:45	131	139	125			
2:00	1	0	1				14:00	139	154	158			
2:15	0	0	3				14:15	147	145	171			
2:30	0	2	2				14:30	139	141	148			
2:45	2	0	1				14:45	168	150	179			
3:00	4	4	0				15:00	173	157	187			
3:15	4	2	3				15:15	169	164	180			
3:30	5	0	3				15:30	172	167	153			
3:45	2	6	5				15:45	162	179	183			
4:00	2	4	4				16:00	160	178	158			
4:15	7	6	3				16:15	187	183	160			
4:30	16	10	6				16:30	163	133	142			
4:45	12	10	9				16:45	134	148	173			
5:00	21	14	17				17:00	146	149	142			
5:15	21	28	24				17:15	152	142	132			
5:30	40	25	41				17:30	147	124	121			
5:45	35	28	36				17:45	149	138	118			
6:00	30	30	28				18:00	129	141	99			
6:15	35	44	42				18:15	132	120	96			
6:30	76	68	64				18:30	107	124	69			
6:45	78	92	81				18:45	100	86	71			
7:00	106	95	95				19:00	84	100	62			
7:15	111	94	103				19:15	75	102	67			
7:30	151	140	145				19:30	76	73	57			
7:45	169	150	163				19:45	66	75	64			
8:00	168	194	192				20:00	59	65	70			
8:15	183	182	206				20:15	56	56	75			
8:30	184	168	178				20:30	48	51	70			
8:45	163	207	180				20:45	52	47	65			
9:00	141	159	171				21:00	57	48	52			
9:15	149	143	147				21:15	31	52	57			
9:30	124	156	135				21:30	34	52	46			
9:45	134	166	119				21:45	32	40	43			
10:00	147	151	117				22:00	23	23	41			
10:15	147	142	137				22:15	22	20	28			
10:30	128	153	158				22:30	13	11	23			
10:45	130	118	150				22:45	12	17	28			
11:00	115	148	136				23:00	25	25	32			
11:15	168	143	161				23:15	7	6	10			
11:30	140	163	136				23:30	13	6	14			
11:45	144	156	159				23:45	4	7	14			



Site notes:

# Royal Oak Dr between Chatterton Way and Falaise Cres

Eastbound

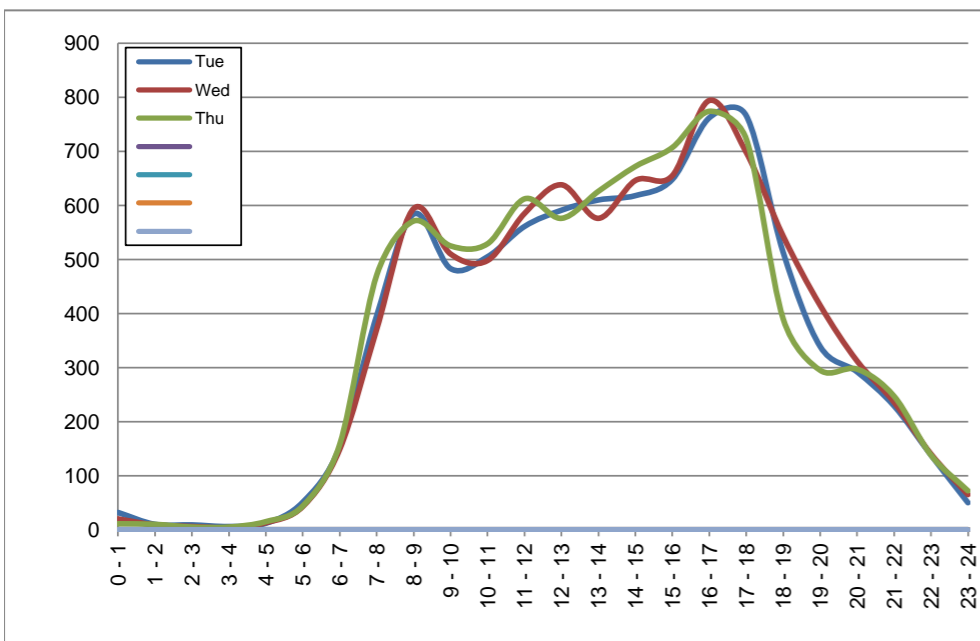
October 29, 2019 to October 31, 2019

## Hourly Volumes

Time Period	Tue	Wed	Thu			
	Oct 29	Oct 30	Oct 31			
0 - 1	32	20	11			
1 - 2	10	9	10			
2 - 3	9	6	5			
3 - 4	6	4	5			
4 - 5	12	13	15			
5 - 6	51	43	44			
6 - 7	153	149	158			
7 - 8	396	371	471			
8 - 9	584	594	571			
9 - 10	483	510	525			
10 - 11	505	498	529			
11 - 12	561	585	612			
12 - 13	591	638	576			
13 - 14	610	576	626			
14 - 15	618	646	672			
15 - 16	648	655	707			
16 - 17	762	794	774			
17 - 18	766	698	723			
18 - 19	513	543	390			
19 - 20	339	415	295			
20 - 21	292	312	297			
21 - 22	229	236	247			
22 - 23	138	140	138			
23 - 24	50	65	72			
<b>Day Total</b>	<b>8358</b>	<b>8520</b>	<b>8473</b>			

## 15-Minute Volumes

Time Start	Tue	Wed	Thu				Time Start	Tue	Wed	Thu			
	Oct 29	Oct 30	Oct 31					Oct 29	Oct 30	Oct 31			
0:00	10	7	5				12:00	131	132	148			
0:15	9	4	3				12:15	147	163	131			
0:30	6	6	2				12:30	143	177	146			
0:45	7	3	1				12:45	170	166	151			
1:00	4	1	4				13:00	142	142	169			
1:15	5	4	1				13:15	166	162	131			
1:30	0	1	3				13:30	143	130	151			
1:45	1	3	2				13:45	159	142	175			
2:00	3	2	2				14:00	143	143	171			
2:15	3	0	1				14:15	156	156	166			
2:30	1	1	1				14:30	152	164	165			
2:45	2	3	1				14:45	167	183	170			
3:00	1	0	1				15:00	152	149	180			
3:15	2	1	2				15:15	163	158	176			
3:30	2	1	0				15:30	155	175	178			
3:45	1	2	2				15:45	178	173	173			
4:00	2	1	4				16:00	170	182	153			
4:15	3	2	3				16:15	188	195	216			
4:30	3	3	3				16:30	201	207	188			
4:45	4	7	5				16:45	203	210	217			
5:00	9	7	5				17:00	208	179	219			
5:15	16	6	7				17:15	212	171	188			
5:30	12	14	10				17:30	190	191	166			
5:45	14	16	22				17:45	156	157	150			
6:00	22	17	18				18:00	140	165	126			
6:15	26	22	21				18:15	130	147	105			
6:30	35	45	56				18:30	121	114	86			
6:45	70	65	63				18:45	122	117	73			
7:00	72	67	52				19:00	86	117	81			
7:15	72	82	100				19:15	102	111	75			
7:30	114	86	136				19:30	78	94	66			
7:45	138	136	183				19:45	73	93	73			
8:00	158	182	156				20:00	69	72	84			
8:15	124	136	113				20:15	87	78	84			
8:30	156	136	135				20:30	68	89	65			
8:45	146	140	167				20:45	68	73	64			
9:00	125	125	133				21:00	75	73	77			
9:15	126	128	123				21:15	80	58	60			
9:30	120	135	128				21:30	33	54	58			
9:45	112	122	141				21:45	41	51	52			
10:00	133	109	130				22:00	44	43	38			
10:15	131	134	129				22:15	37	37	34			
10:30	120	131	133				22:30	22	27	26			
10:45	121	124	137				22:45	35	33	40			
11:00	132	140	150				23:00	19	18	28			
11:15	154	143	156				23:15	12	12	17			
11:30	141	153	165				23:30	8	13	13			
11:45	134	149	141				23:45	11	22	14			



Site notes:



Royal Oak Dr between Chatterton Way and Falaise Cres

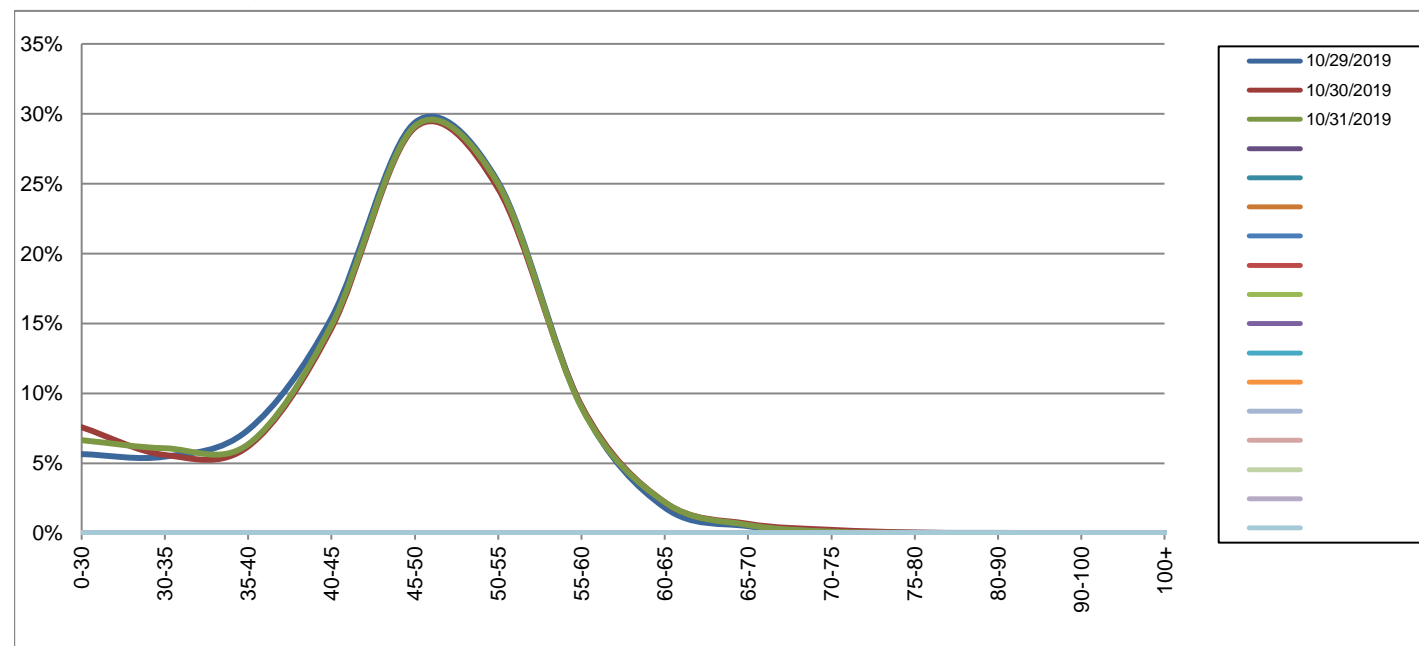
Westbound

October 29, 2019 to October 31, 2019

Daily Speed Bin Percentages															Daily Speed Bin Volumes														Total	Avg.
Bin #	1	2	3	4	5	6	7	8	9	10	11	12	13	14	1	2	3	4	5	6	7	8	9	10	11	12	13	14	Volume	Speed
Bin Speeds	0-30	30-35	35-40	40-45	45-50	50-55	55-60	60-65	65-70	70-75	75-80	80-90	90-100	100+	0-30	30-35	35-40	40-45	45-50	50-55	55-60	60-65	65-70	70-75	75-80	80-90	90-100	100+		
10/29/2019	5.7%	5.5%	7.4%	15.4%	29.4%	25.1%	9.1%	1.8%	0.5%	0.1%	0.0%	0.0%	0.0%	0.0%	464	449	606	1262	2407	2059	744	150	41	11	3	2	0	0	8198	46
10/30/2019	7.6%	5.6%	6.2%	14.7%	29.0%	24.6%	9.1%	2.2%	0.7%	0.2%	0.0%	0.0%	0.0%	0.0%	633	467	518	1224	2421	2057	761	185	56	20	4	0	0	0	8346	46
10/31/2019	6.7%	6.1%	6.4%	14.9%	29.1%	25.0%	9.0%	2.2%	0.6%	0.1%	0.0%	0.0%	0.0%	0.0%	553	505	529	1236	2419	2076	748	184	49	9	2	0	0	0	8310	46
<b>Total</b>	6.6%	5.7%	6.7%	15.0%	29.2%	24.9%	9.1%	2.1%	0.6%	0.2%	0.0%	0.0%	0.0%	0.0%	1650	1421	1653	3722	7247	6192	2253	519	146	40	9	2	0	0	24854	46

Speed Data Summary

Bin #	1	2	3	4	5	6	7	8	9	10	11	12	13	14	Total
Bin Speeds	0-30	30-35	35-40	40-45	45-50	50-55	55-60	60-65	65-70	70-75	75-80	80-90	90-100	100+	
Survey Total	1650	1421	1653	3722	7247	6192	2253	519	146	40	9	2	0	0	24854
% Total	6.6%	5.7%	6.7%	15.0%	29.2%	24.9%	9.1%	2.1%	0.6%	0.2%	0.0%	0.0%	0.0%	0.0%	100%
Accumulated %	6.6%	12.4%	19.0%	34.0%	63.1%	88.1%	97.1%	99.2%	99.8%	100.0%	100.0%	100.0%	100.0%	100%	
Inverse Accum. %	93.4%	87.6%	81.0%	66.0%	36.9%	11.9%	2.9%	0.8%	0.2%	0.0%	0.0%	0.0%	0.0%	0.0%	
Average Speed	46 KM/H														



Site notes:

Royal Oak Dr between Chatterton Way and Falaise Cres

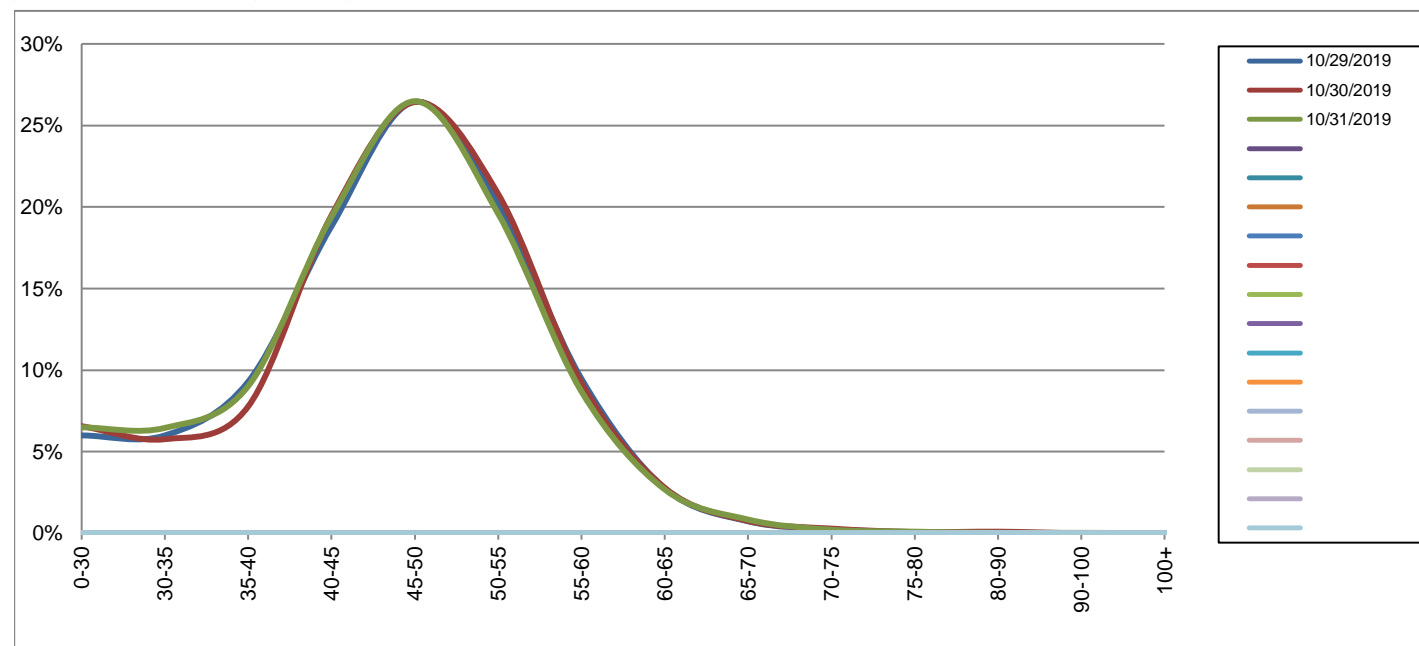
Eastbound

October 29, 2019 to October 31, 2019

Daily Speed Bin Percentages															Daily Speed Bin Volumes														Total	Avg.
Bin #	1	2	3	4	5	6	7	8	9	10	11	12	13	14	1	2	3	4	5	6	7	8	9	10	11	12	13	14	Volume	Speed
Bin Speeds	0-30	30-35	35-40	40-45	45-50	50-55	55-60	60-65	65-70	70-75	75-80	80-90	90-100	100+	0-30	30-35	35-40	40-45	45-50	50-55	55-60	60-65	65-70	70-75	75-80	80-90	90-100	100+		
10/29/2019	6.0%	6.0%	9.3%	18.8%	26.5%	20.2%	9.5%	2.8%	0.7%	0.2%	0.1%	0.0%	0.0%	0.0%	501	501	776	1573	2211	1686	791	230	61	20	6	2	0	0	8358	45
10/30/2019	6.6%	5.8%	7.8%	19.5%	26.4%	20.8%	9.2%	2.8%	0.8%	0.3%	0.1%	0.1%	0.0%	0.0%	559	491	662	1660	2252	1772	785	237	64	24	6	8	0	0	8520	45
10/31/2019	6.5%	6.5%	9.0%	19.4%	26.5%	19.6%	8.7%	2.7%	0.8%	0.2%	0.1%	0.0%	0.0%	0.0%	550	547	764	1644	2244	1660	736	227	71	18	8	2	2	0	8473	45
<b>Total</b>	6.4%	6.1%	8.7%	19.2%	26.5%	20.2%	9.1%	2.7%	0.8%	0.2%	0.1%	0.0%	0.0%	0.0%	1610	1539	2202	4877	6707	5118	2312	694	196	62	20	12	2	0	25351	45

Speed Data Summary

Bin #	1	2	3	4	5	6	7	8	9	10	11	12	13	14	Total
Bin Speeds	0-30	30-35	35-40	40-45	45-50	50-55	55-60	60-65	65-70	70-75	75-80	80-90	90-100	100+	
Survey Total	1610	1539	2202	4877	6707	5118	2312	694	196	62	20	12	2	0	25351
% Total	6.4%	6.1%	8.7%	19.2%	26.5%	20.2%	9.1%	2.7%	0.8%	0.2%	0.1%	0.0%	0.0%	0.0%	100%
Accumulated %	6.4%	12.4%	21.1%	40.3%	66.8%	87.0%	96.1%	98.8%	99.6%	99.9%	99.9%	100.0%	100.0%	100%	
Inverse Accum. %	93.6%	87.6%	78.9%	59.7%	33.2%	13.0%	3.9%	1.2%	0.4%	0.1%	0.1%	0.0%	0.0%	0.0%	
Average Speed	45 KM/H														



Site notes:



Royal Oak Dr between Chatterton Way and Falaise Cres

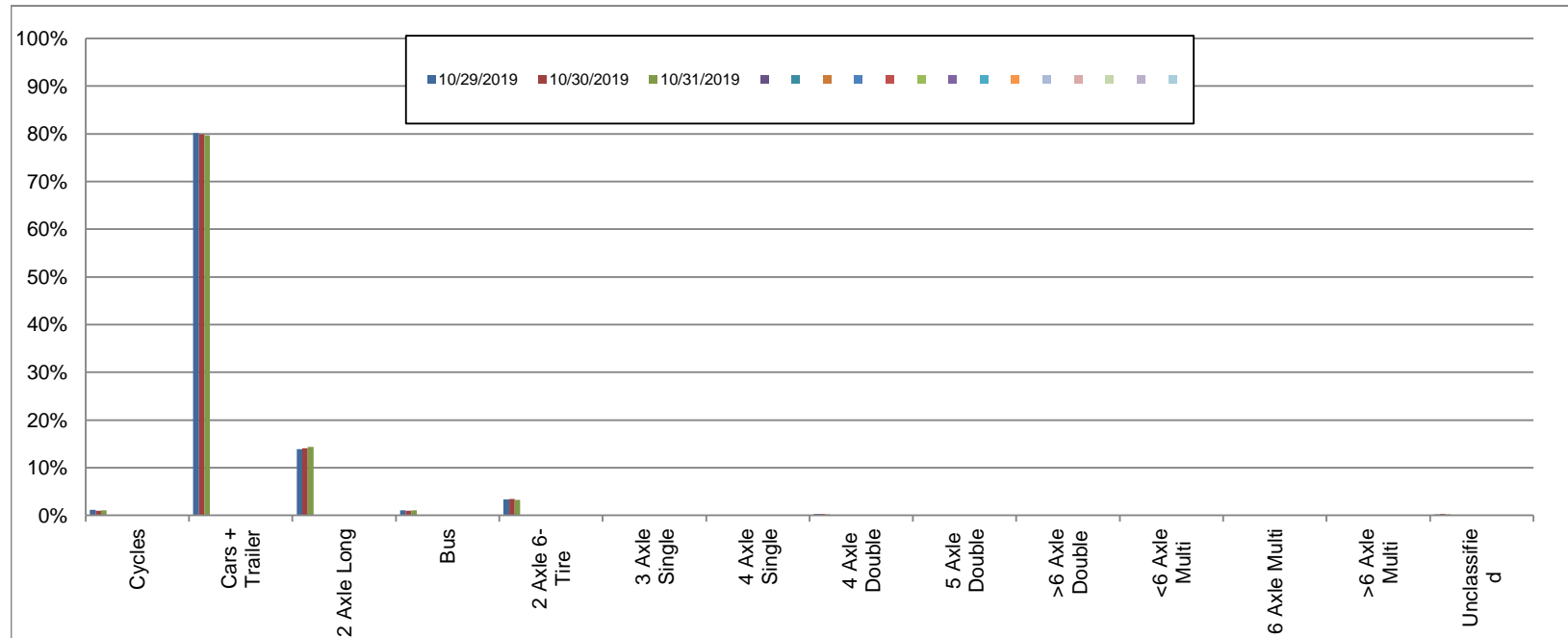
Westbound

October 29, 2019 to October 31, 2019

Daily Class Bin Percentages															Daily Class Bin Volumes											Total Volume				
Bin #	1	2	3	4	5	6	7	8	9	10	11	12	13	14	1	2	3	4	5	6	7	8	9	10	11		12	13	14	
Bin Class	Cycles	Cars + Trailer	2 Axle Long	Bus	2 Axle 6-Tire	3 Axle Single	4 Axle Single	4 Axle Double	5 Axle Double	>6 Axle Double	<6 Axle Multi	6 Axle Multi	>6 Axle Multi	Unclassified	Cycles	Cars + Trailer	2 Axle Long	Bus	2 Axle 6-Tire	3 Axle Single	4 Axle Single	4 Axle Double	5 Axle Double	>6 Axle Double	<6 Axle Multi	6 Axle Multi	>6 Axle Multi	Unclassified		
10/29/2019	1.1%	80.1%	13.8%	1.0%	3.3%	0.0%	0.0%	0.3%	0.0%	0.0%	0.0%	0.0%	0.0%	0.2%	91	6570	1134	85	271	4	2	21	1	1	0	0	0	0	18	8198
10/30/2019	1.0%	79.9%	14.1%	1.0%	3.4%	0.1%	0.0%	0.3%	0.0%	0.0%	0.0%	0.0%	0.0%	0.3%	80	6666	1173	81	283	11	3	24	1	0	0	0	0	0	24	8346
10/31/2019	1.0%	79.7%	14.3%	1.1%	3.3%	0.1%	0.0%	0.2%	0.0%	0.0%	0.0%	0.0%	0.0%	0.2%	85	6626	1191	88	272	10	4	19	1	0	0	0	0	0	14	8310
<b>Total</b>	1.0%	79.9%	14.1%	1.0%	3.3%	0.1%	0.0%	0.3%	0.0%	0.0%	0.0%	0.0%	0.0%	0.2%	256	19862	3498	254	826	25	9	64	3	1	0	0	0	56	24854	

Class Data Summary

Bin #	1	2	3	4	5	6	7	8	9	10	11	12	13	14	Total Volume
Bin Class	Cycles	Cars + Trailer	2 Axle Long	Bus	2 Axle 6-Tire	3 Axle Single	4 Axle Single	4 Axle Double	5 Axle Double	>6 Axle Double	<6 Axle Multi	6 Axle Multi	>6 Axle Multi	Unclassified	Total Volume
Survey Total	256	19862	3498	254	826	25	9	64	3	1	0	0	0	56	24854
% Total	1.0%	79.9%	14.1%	1.0%	3.3%	0.1%	0.0%	0.3%	0.0%	0.0%	0.0%	0.0%	0.0%	0.2%	100%
Accumulated %	1.0%	80.9%	95.0%	96.0%	99.4%	99.5%	99.5%	99.8%	99.8%	99.8%	99.8%	99.8%	99.8%	100.0%	
Inv. Accum. %	99.0%	19.1%	5.0%	4.0%	0.6%	0.5%	0.5%	0.2%	0.2%	0.2%	0.2%	0.2%	0.2%	0.0%	



Classification Descriptions

Bin #	Bin Description
1	Motorcycles
2	Passenger cars, including those with recreational trailers
3	2-axle pick-ups, vans, and RVs, including those with recreational trailers
4	Buses
5	2-axle, 6-tire single units
6	3-axle single units
7	4-axle single units
8	3-axle or 4-axle double unit
9	5-axle double unit
10	6-, 7-, or 8-axle double unit
11	5-axle multiple unit
12	6-axle multiple unit
13	7-or-more-axle multiple unit
14	Vehicles that could not be classified

Site notes:



Royal Oak Dr between Chatterton Way and Falaise Cres

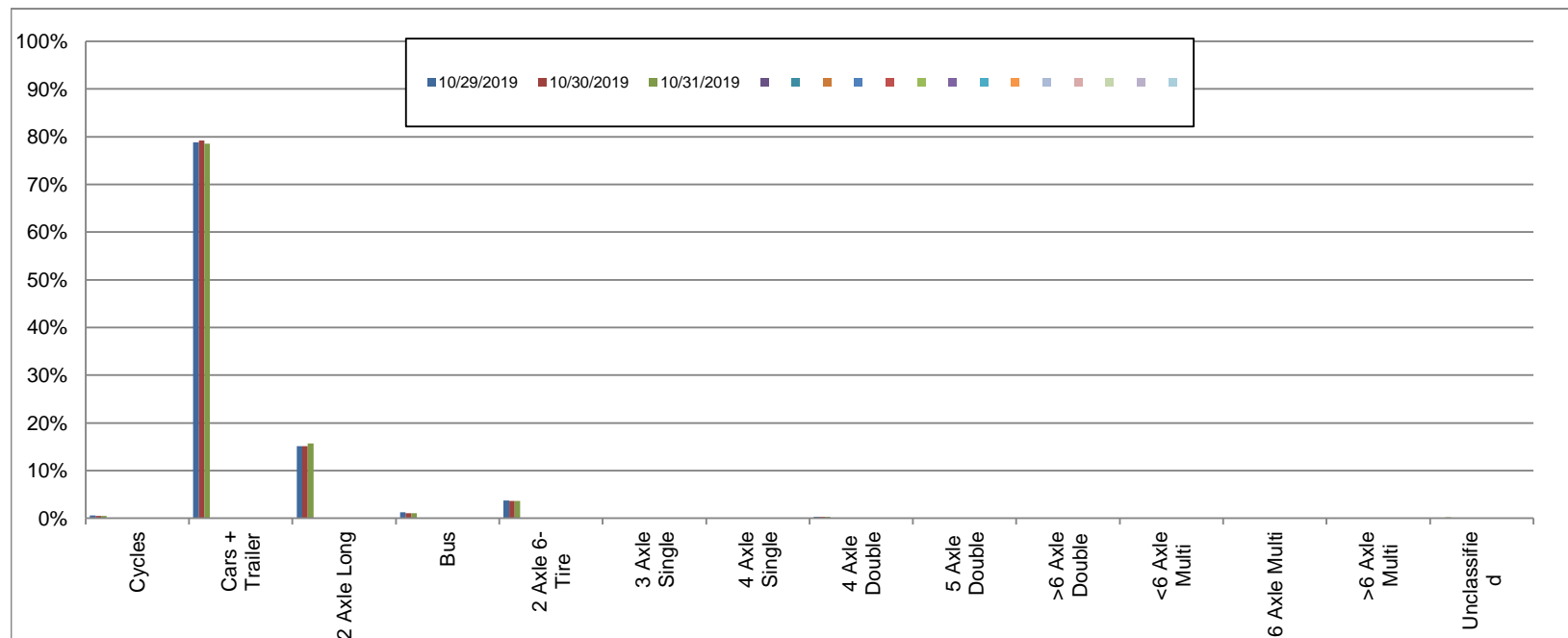
Eastbound

October 29, 2019 to October 31, 2019

Daily Class Bin Percentages															Daily Class Bin Volumes											Total Volume			
Bin #	1	2	3	4	5	6	7	8	9	10	11	12	13	14	1	2	3	4	5	6	7	8	9	10	11		12	13	14
Bin Class	Cycles	Cars + Trailer	2 Axle Long	Bus	2 Axle 6-Tire	3 Axle Single	4 Axle Single	4 Axle Double	5 Axle Double	>6 Axle Double	<6 Axle Multi	6 Axle Multi	>6 Axle Multi	Unclassified	Cycles	Cars + Trailer	2 Axle Long	Bus	2 Axle 6-Tire	3 Axle Single	4 Axle Single	4 Axle Double	5 Axle Double	>6 Axle Double	<6 Axle Multi	6 Axle Multi	>6 Axle Multi	Unclassified	
10/29/2019	0.6%	78.8%	15.1%	1.2%	3.7%	0.2%	0.0%	0.3%	0.0%	0.0%	0.0%	0.0%	0.0%	0.1%	47	6585	1261	104	308	13	4	28	0	0	0	0	0	8	8358
10/30/2019	0.4%	79.2%	15.1%	1.1%	3.6%	0.1%	0.0%	0.3%	0.0%	0.0%	0.0%	0.0%	0.0%	0.1%	38	6746	1288	93	310	11	4	23	0	1	0	0	0	6	8520
10/31/2019	0.4%	78.6%	15.7%	1.1%	3.6%	0.1%	0.0%	0.3%	0.0%	0.0%	0.0%	0.0%	0.0%	0.2%	38	6658	1329	92	304	10	4	23	0	0	1	0	0	14	8473
<b>Total</b>	<b>0.5%</b>	<b>78.8%</b>	<b>15.3%</b>	<b>1.1%</b>	<b>3.6%</b>	<b>0.1%</b>	<b>0.0%</b>	<b>0.3%</b>	<b>0.0%</b>	<b>0.0%</b>	<b>0.0%</b>	<b>0.0%</b>	<b>0.0%</b>	<b>0.1%</b>	<b>123</b>	<b>19989</b>	<b>3878</b>	<b>289</b>	<b>922</b>	<b>34</b>	<b>12</b>	<b>74</b>	<b>0</b>	<b>1</b>	<b>1</b>	<b>0</b>	<b>0</b>	<b>28</b>	<b>25351</b>

Class Data Summary

Bin #	1	2	3	4	5	6	7	8	9	10	11	12	13	14	Total Volume
Bin Class	Cycles	Cars + Trailer	2 Axle Long	Bus	2 Axle 6-Tire	3 Axle Single	4 Axle Single	4 Axle Double	5 Axle Double	>6 Axle Double	<6 Axle Multi	6 Axle Multi	>6 Axle Multi	Unclassified	Total Volume
<b>Survey Total</b>	123	19989	3878	289	922	34	12	74	0	1	1	0	0	28	25351
<b>% Total</b>	0.5%	78.8%	15.3%	1.1%	3.6%	0.1%	0.0%	0.3%	0.0%	0.0%	0.0%	0.0%	0.0%	0.1%	100%
<b>Accumulated %</b>	0.5%	79.3%	94.6%	95.8%	99.4%	99.5%	99.6%	99.9%	99.9%	99.9%	99.9%	99.9%	99.9%	100.0%	
<b>Inv. Accum. %</b>	99.5%	20.7%	5.4%	4.2%	0.6%	0.5%	0.4%	0.1%	0.1%	0.1%	0.1%	0.1%	0.1%	0.0%	



Classification Descriptions

Bin #	Bin Description
1	Motorcycles
2	Passenger cars, including those with recreational trailers
3	2-axle pick-ups, vans, and RVs, including those with recreational trailers
4	Buses
5	2-axle, 6-tire single units
6	3-axle single units
7	4-axle single units
8	3-axle or 4-axle double unit
9	5-axle double unit
10	6-, 7-, or 8-axle double unit
11	5-axle multiple unit
12	6-axle multiple unit
13	7-or-more-axle multiple unit
14	Vehicles that could not be classified

Site notes: